



SMARTPLUG[®].com *Marine*
Innovations in Power Delivery

PRODUCT CATALOG 2021



SAFE

SIMPLE

SECURE

ABOUT OUR COMPANY

SmartPlug Systems is a privately held manufacturing firm specializing in power delivery systems. It was founded in 2007 and is located in Seattle, WA. Its flagship product, the SmartPlug, is a patented device positioned to replace the current power delivery system for Boats, RV's and a variety of specialty vehicles and miscellaneous industrial applications.

SmartPlug Systems

2500 Westlake Avenue North, Suite G
Seattle, WA 98109-2262

Phone - (206) 285-2990

Fax - (206) 285-2981

info@smartplug.com

www.SmartPlug.com



OUR COMMITMENT TO OUR CUSTOMERS

Safe -

- Eliminates Overheating
- Reduced Fire Risk
- Increases Peace of Mind

Simple -

- Self-Aligning
- One Handed Operation
- Fail Safe

Secure -

- Four Locking Features
- Strong, Stable Connection
- Cover Engages Plug

OUR VISION

To improve industry safety and performance standards for recreational and commercial marine power delivery systems.



CATALOGUE CONTENTS

About Our Company	2
Old Technology	4 - 5
Why SmartPlug	6
Testimonials	7
Connector Install	8 - 9
US - 15 AMP	10
US - 30 AMP	11 - 12
US - 50 AMP	13 - 14
EURO - 16 AMP	15 - 16
EURO - 32 AMP	17 - 18
ELCI Sensors & Breakers	19 - 20
Data Ports / Accessories	21
Service Kits	22 - 23

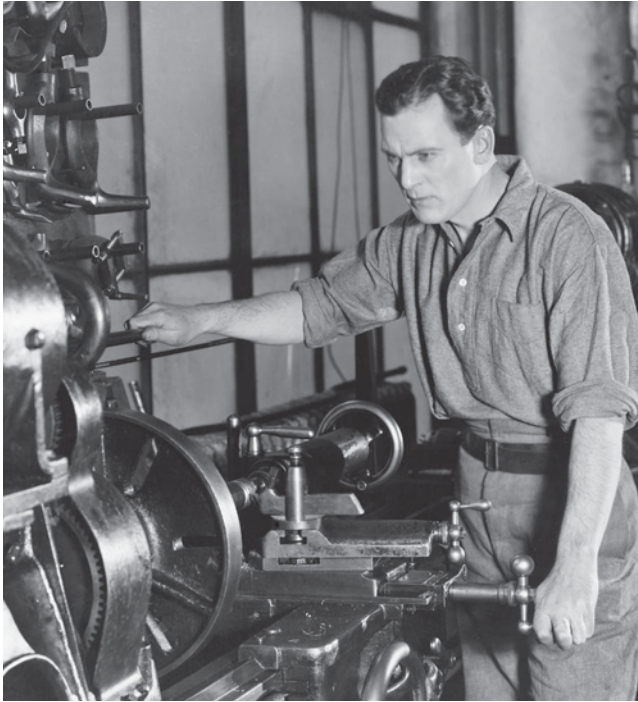
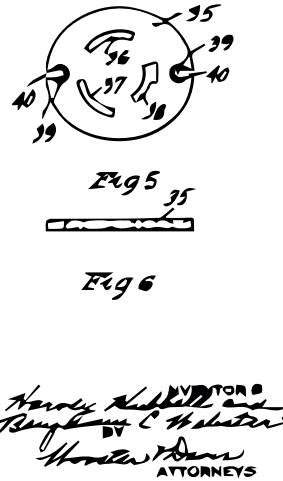
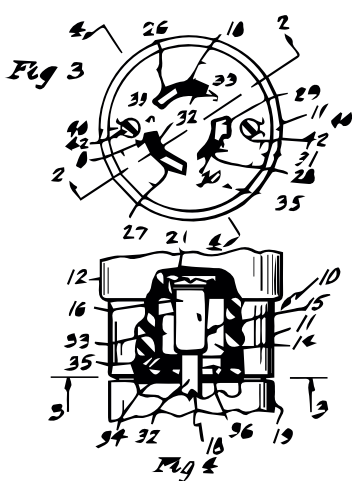
MARINA / DOCKSIDE POWER PRODUCTS 24

Dockside Solutions	25
Receptacles & Weather Doors	26
Receptacle Kits & Spare Parts	27
Dock & Lift Kits	28
Marina Power Products	29 - 31

Contrary to popular belief,
the #1 cause of shore power failure and fires
is not electrical shorting, but rather
overheating caused by poor electrical conductivity.

DID YOU KNOW?

Shore power delivery systems have remained virtually unchanged since they first came out in 1938.



THE PROBLEM WITH THE ORIGINAL SYSTEM:

The shape of electrical pins allows for very little contact area, and the pins themselves are also largely responsible for bearing any physical stress placed on the cord (from constant movement of the boat, someone tripping on the cord, etc.) This results in the pins working loose, further lessening the precious little contact area they had to begin with. Furthermore, such loose connections allow for moisture intrusion and ultimately corrosion of the pins. Arcing occurs and the connection heats up, scorches, and in some cases, catches fire. Because the current draw is unchanged, all of this happens long before a breaker or a GFCI can cut the power. Additionally, the old design can be very difficult to use in low light or hard-to-reach scenarios since the "L" shaped pin must first be located and then oriented before connection.



TWIST-TYPE PRODUCTS - DESIGN FLAWS



- » **Curved Electrical Pin & Clips / Difficult to Align / Limited Contact Area**
Pin contact affected by cord weight & movement / Reduces contact area / Creates heat.
- » **Visible Gap Between Body of Plug & Inlet Housing**
Allows moisture intrusion which creates corrosion, arcing & heat buildup.
- » **Not Weather Proof - Legacy Design Does Not Include Gasket Systems**
Results in corrosion which is a major cause of overheating.

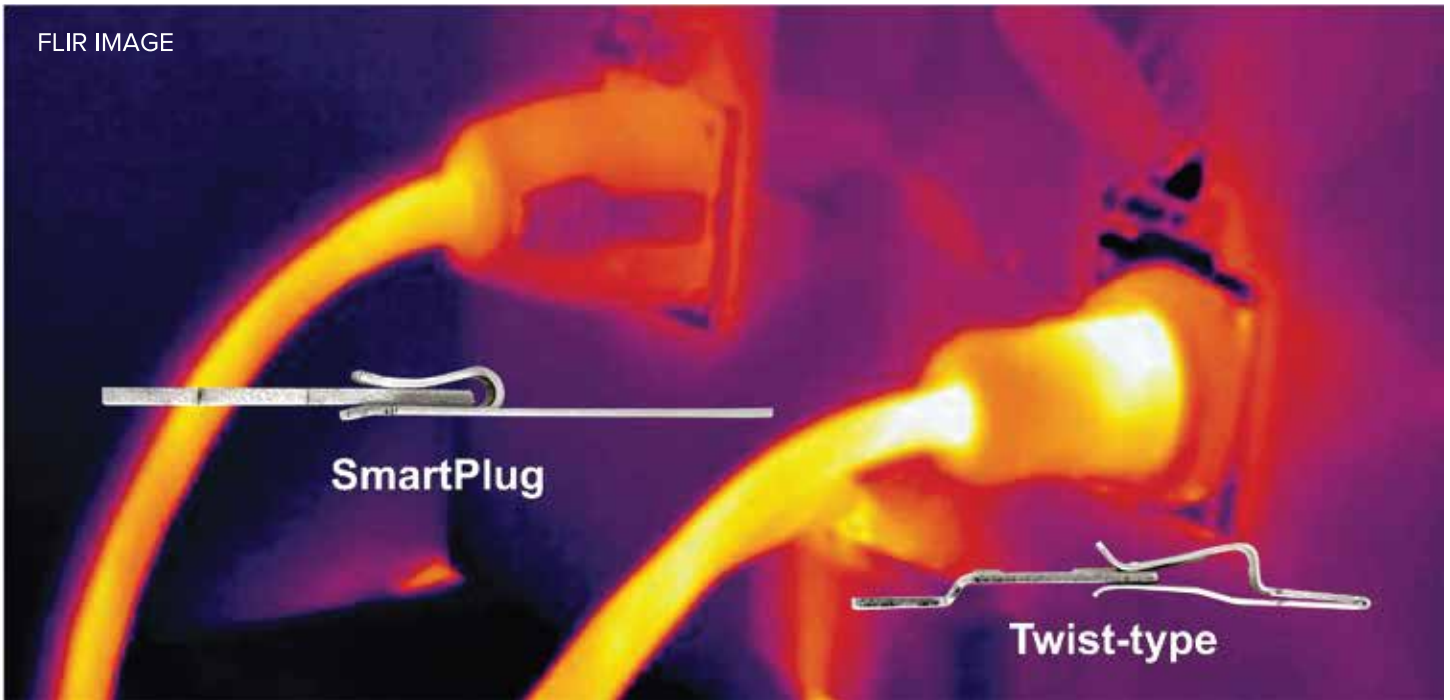


THE SOLUTION

SMARTPLUG HAS OVER 20 TIMES THE METAL CONTACT



SAFER - MORE METAL CONTACT REDUCES OVERHEATING



SmartPlug 30 Amp

- Back of Pin = 16.4 mm x 8.5 mm = 139.4 sq mm
- Front of Pin = 6 mm x 8.5 mm = 51 sq mm

Total Contact Area = 190.4 sq mm

30 Amp Twist-type

- Back of Pin = 1.3 mm x 2.7 mm = 3.51 sq mm
- Front of Pin = 1.3 mm x 2.4 mm = 3.12 sq mm

Total Contact Area With Dimple Locked In Place = 6.63 sq mm

TESTIMONIALS

THEY SAID IT

"We installed SmartPlug on our trawler about a year ago. We hated the original 50 amp plug - Karen was never able to wrestle it onto the boat connector and it always felt a bit unstable. The installation was simple. The whole thing took about an hour with the "help" of our two dogs.

Now after having it for a year and traveling about 6,000 miles along the Great Loop, we've used it at a hundred marinas. It has been exceptional. It's easy to use (even for Karen) and we feel safer having a much better product on-board for such a critical connection. The design is fantastic - well done, SmartPlug. You get five stars from us!"

Karen & Jeffrey Siegel
MV aCappella
Developers of Active Captain

"Have had SmartPlugs on my boat for 2 years since I purchased the boat, were installed 6 years prior. They are awesome! Have heavy draws at dock, in excess of 27 amps for 30 minutes in winter, and 28 plus amps 12-20 hours a day in summer from AC units. Smart-Plugs rule! Totally kill the other plugs, which I am having to replace just about every year on the other end of the cable! Just got off the phone with Terry at SmartPlug, and he was very nice and quickly shipped me out a new gasket set. Highly recommend this solution for power!"

Charles M. Green IV

"As the Technical Director at BoatUS for almost 30 years, one of my responsibilities was to read through insurance claims to find out why accidents occur on boats and how they might have been prevented."

These were reported in Seaworthy, the BoatUS marine insurance damage avoidance publication. One of the more troubling findings I encountered was the surprising number of on-board fires at a boat's AC shore power inlet. The reason for the fires was well known by fire investigators. Instead of being securely bolted like a house connection, boats have to rely on a sliding plug that, over time, tends to wear and corrode. This results in a looser connection that generates excessive heat and causes fires. The latter have destroyed hundreds of boats and even entire marinas.

While at an industry trade show I came across a commonsense solution: The aptly-named SmartPlug. By locking the shore-power cord securely, SmartPlug creates a much tighter connection between the shore power cord and the boats AC inlet. It is my hope that these locking plugs will become the new standard for bringing AC electricity aboard recreational boats. It's a solution that is long overdue."

Bob Adriance
Technical Director at BoatUS Marine Insurance (retired)



4 EASY STEPS TO SAFETY

STEP 1

CUT OFF YOUR PLUG HEAD



STEP 2

STRIP AND PREPARE WIRE



STEP 3

ATTACH WIRES TO PLUG HEAD



STEP 4

ASSEMBLE PLUG HEAD AND GASKET



NO TWISTING! - SELF CLEANING PUSH-IN DESIGN



STAINLESS STEEL INLET
316 cast stainless steel for maximum corrosion resistance.



NON-METALLIC INLETS
Produced with high strength UV materials.

INLET & CONNECTOR FEATURES

LED POWER INDICATOR

Two blue LEDs illuminate to indicate an active power source.
(on SmartPlug premade cordsets)

LOCKING FEATURE

Dual SS locking side levers snap into sides of inlet housing.



CONNECTOR BODY SHAPE

Sleeve design fits snugly within inlet, removing all tension from pins & clips.
Easy one handed insertion.

WEATHERPROOF

Face gasket seals.
Now IP56 rated.

LOCKING FEATURE

Inlet cover snaps onto back of connector.

OUTER MATERIAL

316 cast stainless steel for maximum corrosion resistance.

EASY INSTALLATION

Industry standard hole pattern fits your existing inlet hole pattern.

ELECTRICAL PINS

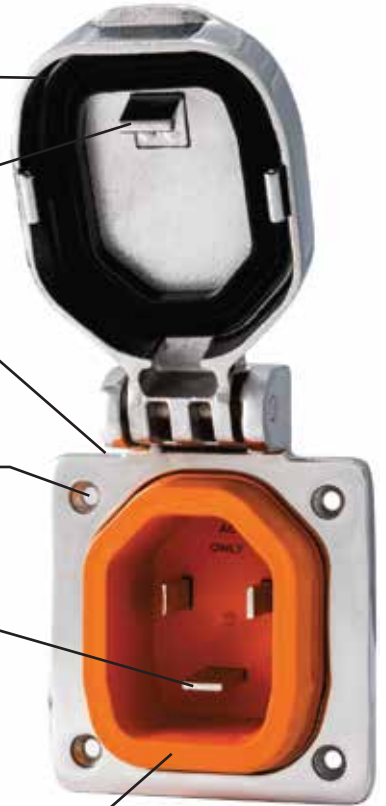
Straight pins with 20X surface area.
No twisting required!

WEATHERPROOF

Face gasket seals against inlet sleeve to eliminate dirt & moisture exposure on electrical pins.

EASE OF USE

Unique plug body shape only goes in the right way. Easy to orient with no misalignment - even in the dark. Pushes straight in & locks automatically.





15 AMP CORDSET

Dual Configuration - 15 Amp / 125VAC Cordset - 15 Amp STD
Male Wall Plug x 30 Amp SmartPlug Female Connector

PART NUMBER	DESCRIPTION	LENGTH	COLOR	BOATSIDE	DOCKSIDE
C15043	15 Amp / 125V Cordset - 30 Amp SmartPlug Female Connector X 15 Amp Wall Plug	4ft	Orange	30 Amp SmartPlug	15 Amp Wall Plug
C15253	15 Amp / 125V Cordset - 30 Amp SmartPlug Female Connector X 15 Amp Wall Plug	25ft	Orange	30 Amp SmartPlug	15 Amp Wall Plug
C15503	15 Amp / 125V Cordset - 30 Amp SmartPlug Female Connector X 15 Amp Wall Plug	50ft	Orange	30 Amp SmartPlug	15 Amp Wall Plug



30 AMP - US PRODUCTS

30 AMP INLETS

PART NUMBER	DESCRIPTION	MATERIAL	COLOR
BM30NT	30 Amp / 125V Male Boatside Inlet	Stainless Steel	Stainless
BM30PW	30 Amp / 125V Male Boatside Inlet	Non-metallic	White
BM30PG	30 Amp / 125V Male Boatside Inlet	Non-metallic	Gray
BM30PB	30 Amp / 125V Male Boatside Inlet	Non-metallic	Black



30 AMP CONNECTOR

PART NUMBER	DESCRIPTION	MATERIAL	COLOR
BF30	30 Amp / 125V / SmartPlug Female Cord End Connector	Non-Metallic	Orange



30 AMP COMBO KITS

PART NUMBER	DESCRIPTION	INLET		CONNECTOR	
		MATERIAL	COLOR	MATERIAL	COLOR
B30ASSYNT	30 Amp / 125V Inlet Male - Boatside Inlet and Female Cord End Connector	Stainless Steel	Stainless	Non-Metallic	Orange
B30ASSYPW	30 Amp / 125V Inlet Male - Boatside Inlet and Female Cord End Connector	Non-Metallic	White	Non-Metallic	Orange
B30ASSYPG	30 Amp / 125V Inlet Male - Boatside Inlet and Female Cord End Connector	Non-Metallic	Gray	Non-Metallic	Orange
B30ASSYPB	30 Amp / 125V Inlet Male - Boatside Inlet and Female Cord End Connector	Non-Metallic	Black	Non-Metallic	Orange



30 AMP - US PRODUCTS



30 AMP CORDSETS

Dual Configuration - 30 Amp / 125V Cordset / SmartPlug Female Boatside Connector w/ Dockside Twist-type Male Connector

PART NUMBER	DESCRIPTION	LENGTH	COLOR	BOATSIDE	DOCKSIDE
C30253	30 Amp / 125V Cordset - 30 Amp SmartPlug Female Boatside Connector 30 Amp / 125V - Twist-type Dockside Male Connector	25ft	Orange	30 Amp SmartPlug	30 Amp Twist-type
C30253W	30 Amp / 125V Cordset - 30 Amp SmartPlug Female Boatside Connector 30 Amp / 125V - Twist-type Dockside Male Connector	25ft	White	30 Amp SmartPlug	30 Amp Twist-type
C30503	30 Amp / 125V Cordset - 30 Amp SmartPlug Female Boatside Connector 30 Amp / 125V - Twist-type Dockside Male Connector	50ft	Orange	30 Amp SmartPlug	30 Amp Twist-type
C30503W	30 Amp / 125V Cordset - 30 Amp SmartPlug Female Boatside Connector 30 Amp / 125V - Twist-type Dockside Male Connector	50ft	White	30 Amp SmartPlug	30 Amp Twist-type



30 AMP CORDSETS & INLETS

Dual Configuration - 30 Amp / 125V Cordset - 30A SmartPlug Female Boatside Connector & 30 Amp Twist-type Male Dockside Connector & 30 Amp Male Boatside Inlet

PART NUMBER	DESCRIPTION	CONNECTOR				INLET	
		LENGTH	COLOR	BOATSIDE	DOCKSIDE	MATERIAL	COLOR
C30503BM30NT	30 Amp / 125V Cordset / 30 Amp SmartPlug Female Boatside Connector & 30 Amp Twist-type Male Dockside Connector & 30 Amp Stainless Steel Inlet	50ft	Orange	30A SmartPlug	30A Twist-type	Stainless Steel	Stainless
C30503BM30PW	30 Amp / 125V Cordset / 30 Amp SmartPlug Female Boatside Connector & 30 Amp Twist-type Male Dockside Connector & 30 Amp Non-Metallic Inlet	50ft	Orange	30A SmartPlug	30A Twist-type	Non-Metallic	White
C30503BM30PG	30 Amp / 125V Cordset / 30 Amp SmartPlug Female Boatside Connector & 30 Amp Twist-type Male Dockside Connector & 30 Amp Non-Metallic Inlet	50ft	Orange	30A SmartPlug	30A Twist-type	Non-Metallic	Gray
C30503BM30PB	30 Amp / 125V Cordset / 30 Amp SmartPlug Female Boatside Connector & 30 Amp Twist-type Male Dockside Connector & 30 Amp Non-Metallic Inlet	50ft	Orange	30A SmartPlug	30A Twist-type	Non-Metallic	Black

50 AMP - US PRODUCTS

50 AMP INLETS

PART NUMBER	DESCRIPTION	MATERIAL	COLOR
BM50S	50 Amp / 125V / 250V Male Boatside Inlet	Stainless Steel	Stainless
BM50PW	50 Amp / 125V / 250V Male Boatside Inlet	Non-metallic	White
BM50PG	50 Amp / 125V / 250V Male Boatside Inlet	Non-metallic	Gray
BM50PB	50 Amp / 125V / 250V Male Boatside Inlet	Non-metallic	Black



50 AMP CONNECTOR

PART NUMBER	DESCRIPTION	MATERIAL	COLOR
BF50	50 Amp / 125V / 250V / SmartPlug Female Cord End Connector	Non-Metallic	Orange



50 AMP COMBO KITS

PART NUMBER	DESCRIPTION	INLET		CONNECTOR	
		MATERIAL	COLOR	MATERIAL	DOCKSIDE
B50ASSY	50 Amp / 125 / 250V Inlet Male - Boatside Inlet and Female Cord End Connector	Stainless Steel	Stainless	Non-Metallic	Orange
B50ASSYPW	50 Amp / 125 / 250V Inlet Male - Boatside Inlet and Female Cord End Connector	Non-Metallic	White	Non-Metallic	Orange
B50ASSYPG	50 Amp / 125 / 250V Inlet Male - Boatside Inlet and Female Cord End Connector	Non-Metallic	Gray	Non-Metallic	Orange
B50ASSYPB	50 Amp / 125 / 250V Inlet Male - Boatside Inlet and Female Cord End Connector	Non-Metallic	Black	Non-Metallic	Orange



C50504



C50254

50 AMP CORDSETS

Dual Configuration - 50 Amp / 125 / 250V
SmartPlug Female Boatside & 50 Amp
Twist-type Male 125 / 250V Dockside

PART NUMBER	DESCRIPTION	LENGTH	COLOR	BOATSIDE	DOCKSIDE
C50254	50 Amp / 125 / 250V Cordset - SmartPlug Female Boatside X 50 Amp Male Twist-type Dockside Connector	25ft	Orange	50 Amp SmartPlug	50 Amp Twist-type
C50504	50 Amp / 125 / 250V Cordset - SmartPlug Female Boatside X 50 Amp Male Twist-type Dockside Connector	50ft	Orange	50 Amp SmartPlug	50 Amp Twist-type

50 AMP REEL REPLACEMENT CORDS

Single Configuration - 50 Amp / 125 / 250V Male Twist-type x Open End



PART NUMBER	DESCRIPTION	LENGTH	COLOR	BOATSIDE	DOCKSIDE
C50254R	50 Amp / 125 / 250V Cord - Open End Boatside X 50 Amp Male Twist-type Dockside Connector	25ft	Orange	Open End	50 Amp Twist-type
C50504R	50 Amp / 125 / 250V Cord - Open End Boatside X 50 Amp Male Twist-type Dockside Connector	50ft	Orange	Open End	50 Amp Twist-type



16 AMP INLETS

PART NUMBER	DESCRIPTION	MATERIAL	COLOR
BM16NT	16 Amp / 230V Inlet / Male Boatside Inlet	Stainless Steel	Stainless
BM16PW	16 Amp / 230V Inlet / Male Boatside Inlet	Non-Metallic	White
BM16PG	16 Amp / 230V Inlet / Male Boatside Inlet	Non-Metallic	Gray
BM16PB	16 Amp / 230V Inlet / Male Boatside Inlet	Non-Metallic	Black



16 AMP CONNECTOR

PART NUMBER	DESCRIPTION	MATERIAL	COLOR
BF16	16 Amp / 230V SmartPlug Female Cord End Connector	Non-Metallic	Orange





16 AMP COMBO KITS

PART NUMBER	DESCRIPTION	INLET		CONNECTOR	
		MATERIAL	COLOR	MATERIAL	COLOR
B16ASSYNT	16 Amp / 230V Inlet Male - Boatside Inlet and Female Cord End Connector	Stainless Steel	Stainless	Non-Metallic	Orange
B16ASSYPW	16 Amp / 230V Inlet Male - Boatside Inlet and Female Cord End Connector	Non-Metallic	White	Non-Metallic	Orange
B16ASSYPG	16 Amp / 230V Inlet Male - Boatside Inlet and Female Cord End Connector	Non-Metallic	Gray	Non-Metallic	Orange
B16ASSYPB	16 Amp / 230V Inlet Male - Boatside Inlet and Female Cord End Connector	Non-Metallic	Black	Non-Metallic	Orange

16 AMP HARMONIZED CORDS

Single Configuration - 16 Amp / 230V Harmonized Cord - Female Connector w/ Open End



PART NUMBER	DESCRIPTION	LENGTH	COLOR	BOATSIDE	DOCKSIDE
C16123	16 Amp / 230V Cord - 16A SmartPlug Female Connector X Open End	12.5M	Orange	16 Amp SmartPlug	Open End
C16153	16 Amp / 230V Cord - 16A SmartPlug Female Connector X Open End	15.5M	Orange	16 Amp SmartPlug	Open End
C16253	16 Amp / 230V Cord - 16A SmartPlug Female Connector X Open End	25M	Orange	16 Amp SmartPlug	Open End

32 AMP - EURO

PRODUCTS



32 AMP INLETS

PART NUMBER	DESCRIPTION	MATERIAL	COLOR
BM32S	32 Amp / 230V Inlet / Male Boatside Inlet	Stainless Steel	Stainless
BM32PW	32 Amp / 230V Inlet / Male Boatside Inlet	Non-Metallic	White
BM32PG	32 Amp / 230V Inlet / Male Boatside Inlet	Non-Metallic	Gray
BM32PB	32 Amp / 230V Inlet / Male Boatside Inlet	Non-Metallic	Black



32 AMP CONNECTOR

PART NUMBER	DESCRIPTION	MATERIAL	COLOR
BF32	32 Amp / 230V SmartPlug Female Cord End Connector	Non-Metallic	Orange





32 AMP COMBO KITS

PART NUMBER	DESCRIPTION	INLET		CONNECTOR	
		MATERIAL	COLOR	MATERIAL	COLOR
B32ASSY	32 Amp / 230V Inlet Male - Boatside Inlet and Female Cord End Connector	Stainless Steel	Stainless	Non-Metallic	Orange
B32ASSYPW	32 Amp / 230V Inlet Male - Boatside Inlet and Female Cord End Connector	Non-Metallic	White	Non-Metallic	Orange
B32ASSYPG	32 Amp / 230V Inlet Male - Boatside Inlet and Female Cord End Connector	Non-Metallic	Gray	Non-Metallic	Orange
B32ASSYPB	32 Amp / 230V Inlet Male - Boatside Inlet and Female Cord End Connector	Non-Metallic	Black	Non-Metallic	Orange

32 AMP HARMONIZED CORDS

Single Configuration - 32 Amp / 230V Cord - 32 Amp SmartPlug Female Connector X Open End



PART NUMBER	DESCRIPTION	LENGTH	COLOR	BOATSIDE	DOCKSIDE
C32153	32 Amp / 230V Cord - 32 Amp SmartPlug Female Boatside Connector X Open End	15M	Orange	32 Amp SmartPlug	Open End
C32253	32 Amp / 230V Cord - 32 Amp SmartPlug Female Boatside Connector X Open End	25M	Orange	32 Amp SmartPlug	Open End

ELCI SENSOR AND BREAKERS



Description

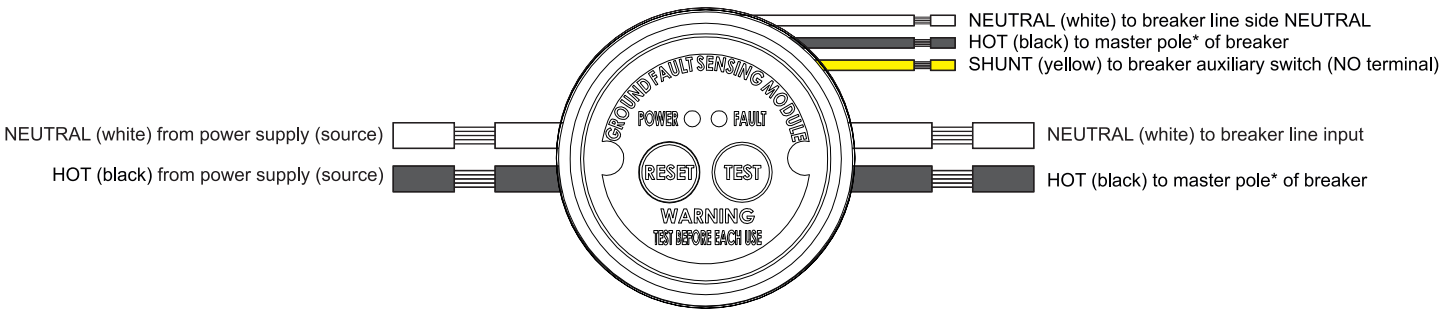
The LineGard™ PGFM product family provides ELCI (equipment leakage) ground fault sensing and is designed and manufactured by North Shore Safety, a leader in innovative safety products. The PGFM series operates in tandem with an Airpax™ LEL series, UL 489 listed circuit breaker, with shunt trip and auxiliary switch manufactured by Sensata Technologies.

The combined assembly of the PGFM and an Airpax™ breaker meets the requirements of ABYC E-11 for ground fault protection and main shore power circuit protection. The PGFM constantly monitors the current balance of the conductors supplying power to the boat load (wire / cables) supplying power to the load. When a ground fault of 27mA nominal (30mA max) or higher occurs, the PGFM uses the LEL's shunt trip coil to signal the breaker to trip.

FEATURES

- Power and fault status indicators
- Provides identification of a ground fault vs. short circuit trip
- Chemical and UV resistant enclosure
- Trip level of sensing device < 30mA (27mA nominal) at trip time of < 100mS (60mS nominal) per ABYC E-11
- Power range and operating voltage: 0 - 50 Amps, 120 / 240 VAC
- Unit operating temperature is -35° C to +66° C
- Accommodates up to 3 wires, 6 AWG

WIRING DIAGRAM (120 VAC APPLICATION)



AIRPAX™ LEL & IDLNK SERIES CIRCUIT BREAKER RATINGS (PER UL489)				
Voltage	Current	Frequency	Short Circuit	Poles
125VAC	.05 to 50 amps	50/60 Hz	5,000 amps	1 to 3
120/240VAC	.05 to 50 amps	50/60 Hz	5,000 amps	2 to 3

LINEGARD™ PGFM SERIES ELCI SPECIFICATIONS	
Salt Fog (Corrosion)	ASTM B117
Shock	33CFR183.534 - modified to supply 5,000 shocks @ 25G, instead of test standard of 1,000 shocks
Vibration	MIL-STD-810 (random vibrate 4G RMS), IEC6945 (sine sweep 5 to 100 Hz for low frequency)
Ignition Protection	SAE J1171 (UL1500)



STAINLESS COMBO KITS - ELCI SENSOR / BREAKER

PART NUMBER	DESCRIPTION	MATERIAL	COLOR
ELCIBRKR30SS	Combo Kit - ELCI Sensor & 30 Amp Breaker / Stainless Steel	Stainless Steel	Stainless
ELCIBRKR50SS	Combo Kit - ELCI Sensor & 50 Amp Breaker / Stainless Steel	Stainless Steel	Stainless

WHITE NON-METALLIC COMBO KITS - ELCI SENSOR / BREAKER

PART NUMBER	DESCRIPTION	MATERIAL	COLOR
ELCIBRKR30PW	Combo Kit - ELCI Sensor & 30 Amp Breaker / White Non-metallic	Non-Metallic	White
ELCIBRKR50PW	Combo Kit - ELCI Sensor & 50 Amp Breaker / White Non-metallic	Non-Metallic	White

INDIVIDUAL COMPONENTS - STAINLESS STEEL / ELCI SENSOR / BREAKER

Designed to work specifically with ELCI30BRKERSS & ELCI50BRKERSS

PART NUMBER	DESCRIPTION	MATERIAL	COLOR
ELCISENSORSS	30 Amp / 50 Amp - ELCI Sensor - Stainless Steel	Stainless Steel	Stainless
ELCI30BRKERSS	30 Amp Breaker - Stainless Steel Special 30 ma trip breaker to work with ELCI sensor ELCISENSORSS	Stainless Steel	Stainless
ELCI50BRKERSS	50 Amp Breaker - Stainless Steel Special 30 ma trip breaker to work with ELCI sensor ELCISENSORSS	Stainless Steel	Stainless

INDIVIDUAL COMPONENTS - NON-METALLIC / ELCI SENSOR / BREAKER

Designed to work specifically with ELCI30BRKERNMW & ELCI50BRKERNMW

PART NUMBER	DESCRIPTION	MATERIAL	COLOR
ELCISENSORNMW	30 Amp / 50 Amp - ELCI Sensor - White Non-Metallic	Non-Metallic	White
ELCI30BRKERNMW	30 Amp Breaker - White Non-Metallic Special 30 ma trip breaker to work with ELCI sensor ELCISENSORNMW	Non-Metallic	White
ELCI50BRKERNMW	50 Amp Breaker - White Non-Metallic Special 30 ma trip breaker to work with ELCI sensor ELCISENSORNMW	Non-Metallic	White

PHONE / TV / CABLE / INTERNET

DATA PORTS



Description

The SmartPlug Data Port products are the perfect complement to our stainless shore power inlets. These products offer the same look and quality marine grade stainless steel. They are available in coax cable, ethernet and mixed combinations.



PART NUMBER	DESCRIPTION	MATERIAL
BDCOAX	Single - TV / Internet Connector - Stainless Steel	Stainless Steel
BDCOAXCC	Double - TV / Internet Connector - Stainless Steel	Stainless Steel
BDETH	Single - Ethernet Cable Connector - Stainless Steel	Stainless Steel
BDCOAXEC	Combo - TV / Internet Connector & Ethernet Cable Connector	Stainless Steel

ACCESSORIES



16, 30, 32 & 50 AMP - WEATHER CAP

Description

The SmartPlug Weather Cap (A1001) protects SmartPlug shore power connectors (16, 30, 32 & 50 Amp) from moisture when not in use. These weather resistant caps come with a convenient lanyard for tethering the cover to the cordset.

PART NUMBER
A1001

16, 30, 32 & 50 AMP CARRY BAG

Description

The SmartPlug nylon cordset bag provides a convenient way to transport and store your cordset. The cordset bag includes handles and a zipper for easy use.

PART NUMBER	FITS CORDS SETS
CB1001	16 Amp - 12,5 m, 15,5 m, 25 m & 32 Amp - 15 m, 25 m 30 Amp - 25 ft, 50 ft & 50 Amp - 25 ft



SERVICE KITS

SERVICE AND GASKET KITS



Description

SmartPlug service kits provide all of the electrical components, hardware, and gaskets required to replace or repair the products. These kits include a small amount of dish soap for the installation of new connector ends (boatside). The inlet kits include a small Torx driver to remove the four screws from the mounting flange. Service kits that require wire connections include an allen wrench for attaching the wires to the color coded wire guides in the inlets and connectors.



FEMALE CONNECTOR / ELECTRICAL

SERVICE KITS / FOR BF30, F50, BF16 & BF32 PRODUCTS

PART NUMBER	DESCRIPTION
PKF30	Service Kit - 30 Amp / 125V - SmartPlug BF30 Female Connector
PKF50	Service Kit - 50 Amp / 125 / 250V - SmartPlug BF50 Female Connector
PKF16	Service Kit - 16 Amp / 230V - SmartPlug BF16 Female Connector
PKF32	Service Kit - 32 Amp / 230V - SmartPlug BF32 Female Connector



SIDE LEVER KIT

SIDE LEVER KIT / REPLACEMENTS FOR ALL SMARTPLUG FEMALE CONNECTORS

PART NUMBER	DESCRIPTION
PKF01	Side Lever Kit - Stainless Steel Levers, Pins And Springs To Fit All SmartPlug Connectors

MALE INLET CONNECTOR / ELECTRICAL

SERVICE KITS / FOR BM30, BM50, BM16, BM32, PRODUCTS

PART NUMBER	DESCRIPTION
PKM30	Service Kit - 30 Amp / 125V - SmartPlug BM30 Male Inlet
PKM50	Service Kit - 50 Amp / 125 / 250V - SmartPlug BM50 Male Inlet
PKM16	Service Kit - 16 Amp / 230V - SmartPlug BM16 Male Inlet
PKM32	Service Kit - 32 Amp / 230V - SmartPlug BM32 Male Inlet





FEMALE CONNECTOR / GASKETS

GASKET KITS / REPLACES GASKETS FOR BF30, BF50, BF16 & BF32 PRODUCTS

PART NUMBER	DESCRIPTION
PKF30G	Gasket Kit - 30 Amp / 125V - SmartPlug BF30 Female Connector
PKF50G	Gasket Kit - 50 Amp / 125 / 250V - SmartPlug BF50 Female Connector
PKF16G	Gasket Kit - 16 Amp / 230V - SmartPlug BF16 Female Connector
PKF32G	Gasket Kit - 32 Amp / 230V - SmartPlug BF32 Female Connector

MALE INLET / GASKETS

GASKET KIT / REPLACES GASKETS FOR BM30, BM50, BM16 & BM32 PRODUCTS

PART NUMBER	DESCRIPTION
PKMGKT	Gasket Kit - Fits All SmartPlug Male Including Stainless & Non-metallic Inlets



MARINA / DOCKSIDE POWER PRODUCTS



DOCKSIDE SOLUTIONS

For many years boaters have experienced the safety, security and simplicity of SmartPlug products on the boatside while still dealing with the same old issues created by legacy twist-type products on the dockside. Those days are changing with the introduction of SmartPlug's New dockside product offering. SmartPlug has applied decades of experience and customer feedback to create a product line that allows you to upgrade your shore power connection with SmartPlug technology.

Most boaters have seen dangerous power cord connections on the docks. Legacy twist-type systems were never designed for the harsh marine environment. Pedestals with twist-type systems do not include weather gaskets or any mechanical locking system to secure the plug in the pedestal. The L-pin connector in the twist-type system is difficult to align and ensure a safe connection. Below are some examples of jury-rigged solutions see in a marina.

LEGACY TWIST-TYPE CONNECTIONS



SMARTPLUG MARINA / DOCKSIDE SOLUTIONS

SAFE - ELIMINATES OVERHEATING & FIRE POTENTIAL

- 20x more electrical contact area than the standard twist-type connectors
- Multi-point locking system with stainless release
- Solid sleeve design helps eliminates internal arcing and overheating
- Weather resistant seals eliminates water intrusion and corrosion (stays nice & dry)

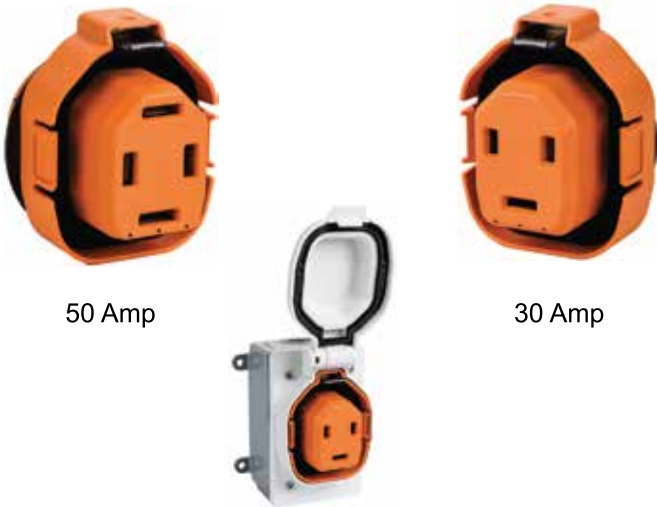
EASY TO USE

- Easy alignment with one handed insertion
- Plugs straight in - no twisting required
- Automatic locking system

QUALITY

- 7 Year warranty - best in the industry
- No-hassle product warranty program





50 Amp

30 Amp

Vertical Weather Door With Receptacle

Description

SmartPlug receptacles are designed to provide the maximum surface contact to efficiently transfer power while minimizing resistance which causes heat. These receptacles are used to upgrade existing marina pedestals. They can also be installed in industry standard outdoor electrical boxes when used in conjunction with our spring loaded weather doors.

SmartPlug plugs self-align with these receptacles and have an automatic lock system when engaged. The push in design provides self cleaning for the pins and clips which insures clean power transfer.

30 & 50 AMP RECEPTACLES

SMARTPLUG FEMALE 125V & 250V

PART NUMBER	DESCRIPTION	RECEPTACLE COLOR
RF30	30 Amp SmartPlug Female Receptacle / 125V	Orange
RF50	50 Amp SmartPlug Female Receptacle / 125 / 250V	Orange



30 & 50 AMP WEATHER DOORS

SMARTPLUG FEMALE 125V / 250V

WEATHER DOOR - 30 & 50 AMP (KNOCKOUT FOR 50 AMP)

PART NUMBER	DESCRIPTION	WEATHER DOOR COLOR
RDPWL	30 Amp / 50 Amp Weather Door / Horizontal	White
RDPWP	30 Amp / 50 Amp Weather Door / Vertical	White

30 & 50 AMP RECEPTACLE KITS

MARINA / DOCKSIDE PRODUCTS

EATON LIGHTHOUSE RECEPTACLE CONVERSION KITS WITH SMARTPLUG RECEPTACLES



LHRF50ASSY



LHRF3050ASSY

PART NUMBER	DESCRIPTION
LHRF30ASSY	30 Amp Single Receptacle Kit, (Includes: 30 Amp SmartPlug Receptacle, Main Eaton Mounting Bracket, 30 Amp SmartPlug Adapter Plate, Legacy Adapter Plate)
LHRF50ASSY	50 Amp Single Receptacle Kit, (Includes: 50 Amp SmartPlug Receptacle, Main Eaton Mounting Bracket, 50 Amp SmartPlug Adapter Plate, Legacy Adapter Plate)
LH2RF30ASSY	30 Amp Double Receptacle Kit, (Includes: (2) 30 Amp SmartPlug Receptacles, Main Eaton Mounting Bracket, (2) 30 Amp SmartPlug Adapter Plates)
LH2RF50ASSY	50 Amp Double Receptacle Kit, (Includes: (2) 50 Amp SmartPlug Receptacles, Main Eaton Mounting Bracket, (2) 50 Amp SmartPlug Adapter Plates)
LHRF3050ASSY	30 Amp / 50 Amp Receptacle Kit, (Includes: (1) 30 Amp SmartPlug Receptacle, (1) 50 Amp SmartPlug Receptacle, Main Eaton Mounting Bracket, 30 Amp SmartPlug Adapter Plate and a 50 Amp SmartPlug Adapter Plate)

30 & 50 AMP SPARE PARTS

EATON LIGHTHOUSE CONVERSION SPARE PARTS



LHRBRKT30



LHRBRKTL530



LHRBRKTB

PART NUMBER	DESCRIPTION
LHRBRKT	Main Eaton Mounting Bracket - For Eaton Lighthouse Pedestal
LHRBRKT30	Plate - SmartPlug - 30 Amp Adapter Plate - To fit a SmartPlug Receptacle into an Eaton Lighthouse Pedestal
LHRBRKT50	Plate - SmartPlug - 50 Amp Adapter Plate - To fit a SmartPlug Receptacle into an Eaton Lighthouse Pedestal
LHRBRKTL530	Plate - Legacy - 30 Amp Adapter Plate - To fit a Legacy Connector into Main Eaton Mounting Bracket
LHRBRKT60729	Plate - Legacy - 50 Amp Adapter Plate - To fit a Legacy Connector into Main Eaton Mounting Bracket
LHRBRKTB	Plate - Blank - 30 Amp / 50 Amp - Blank Plate to plug a hole



DOCK & LIFT KITS

MARINA / DOCKSIDE PRODUCTS



SINGLE WEATHER BOX KIT



25 FT CORD WITH SMARTPLUG MALE & FEMALE PLUG ENDS



BOATSIDE INLET STAINLESS STEEL



BOATSIDE INLET WHITE

30 AMP / 125 V DOCK & LIFT KITS

PART NUMBER	DESCRIPTION	INLET	CORD COLOR
BLFT30ASSYPWO	30 Amp / 125 V - 25 ft Cord With Male and Female SmartPlug Ends / Single Weather Box Kit / Boatside Inlet	Non-Metallic / White	Orange
BLFT30ASSYNTW	30 Amp / 125 V - 25 ft Cord With Male and Female SmartPlug Ends / Single Weather Box Kit / Boatside Inlet	Stainless Steel	White
BLFT30ASSYNTW	30 Amp / 125 V - 25 ft Cord With Male and Female SmartPlug Ends / Single Weather Box Kit / Boatside Inlet	Stainless Steel	Orange
BLFT30ASSYPWW	30 Amp / 125 V - 25 ft Cord With Male and Female SmartPlug Ends / Single Weather Box Kit / Boatside Inlet	Non-Metallic / White	White



30 & 50 AMP MARINA SHOREPOWER CORDSETS

30 AMP & 50 AMP - SMARTPLUG MALE & SMARTPLUG FEMALE CORDSETS



CM30253W



CM50504

PART NUMBER	DESCRIPTION	LENGTH	COLOR	BOATSIDE	DOCKSIDE
CM30253	30 Amp SmartPlug Male & SmartPlug Female Cordset	25ft	Orange	30 Amp SmartPlug	30 Amp SmartPlug
CM30253W	30 Amp SmartPlug Male & SmartPlug Female Cordset	25ft	White	30 Amp SmartPlug	30 Amp SmartPlug
CM30503	30 Amp SmartPlug Male & SmartPlug Female Cordset	50ft	Orange	30 Amp SmartPlug	30 Amp SmartPlug
CM30503W	30 Amp SmartPlug Male & SmartPlug Female Cordset	50ft	White	30 Amp SmartPlug	30 Amp SmartPlug
CM50254	50 Amp SmartPlug Male & SmartPlug Female Cordset	25ft	Orange	50 Amp SmartPlug	50 Amp SmartPlug
CM50504	50 Amp SmartPlug Male & SmartPlug Female Cordset	50ft	Orange	50 Amp SmartPlug	50 Amp SmartPlug

30 & 50 AMP SHORE POWER ADAPTERS

MARINA / DOCKSIDE PRODUCTS

30 & 50 AMP - DUAL CONFIGURATION SMARTPLUG POWER ADAPTERS



C15043



CM30043L530R



C30043



CM50043

PART NUMBER	DESCRIPTION	LENGTH	COLOR	BOATSIDE	DOCKSIDE
C15043	30 Amp SmartPlug Female Connector to 15 Amp STD Wall Plug Connector	4ft	Orange	30 Amp Female SmartPlug Connector	15 Amp Wall Plug Connector
CM30043L530R	30 Amp Female Twist-type Connector to 30 Amp SmartPlug Male Connector	4ft	Orange	30 Amp Twist-type Female Connector	30 Amp Male SmartPlug Connector
C30043	30 Amp SmartPlug Female Connector to 30 Amp SmartPlug Male Connector	4ft	Orange	30 Amp Female SmartPlug Connector	30 Amp Twist-type Male SmartPlug Connector
CM50043	50 Amp SmartPlug Female Connector to 30 Amp SmartPlug Male Connector	4ft	Orange	50 Amp Female SmartPlug Connector	30 Amp Male SmartPlug Connector





30 & 50 AMP SHORE POWER ADAPTERS

30 & 50 AMP - DUAL CONFIGURATION SMARTPLUG POWER ADAPTERS



C50044L515P



C50044L530P



C50044



CM5004460729R

PART NUMBER	DESCRIPTION	LENGTH	COLOR	BOATSIDE	DOCKSIDE
C50044L515P	50 Amp SmartPlug Female Connector to 15 Amp STD Wall Plug Connector	4ft	Orange	50 Amp Female SmartPlug Connector	15 Amp Wall Plug Connector
C50044L530P	50 Amp SmartPlug Female Connector to 30 Amp Male Twist-type Connector	4ft	Orange	50 Amp Female SmartPlug Connector	30 Amp Twist-type Connector
C50044	50 Amp SmartPlug Female Connector to 50 Amp Male Twist-type Connector	4ft	Orange	50 Amp Female SmartPlug Connector	50 Amp Twist-type Connector
CM5004460729R	50 Amp SmartPlug Male Connector to 50 Amp Female Twist-type Connector	4ft	Black	50 Amp Twist-type Connector	50 Amp Male SmartPlug Connector



info@smartplug.com 206.285.2990

2500 Westlake Avenue North, Suite G
Seattle, WA 98109-2262
www.smartplug.com

SAFE

SIMPLE

SECURE